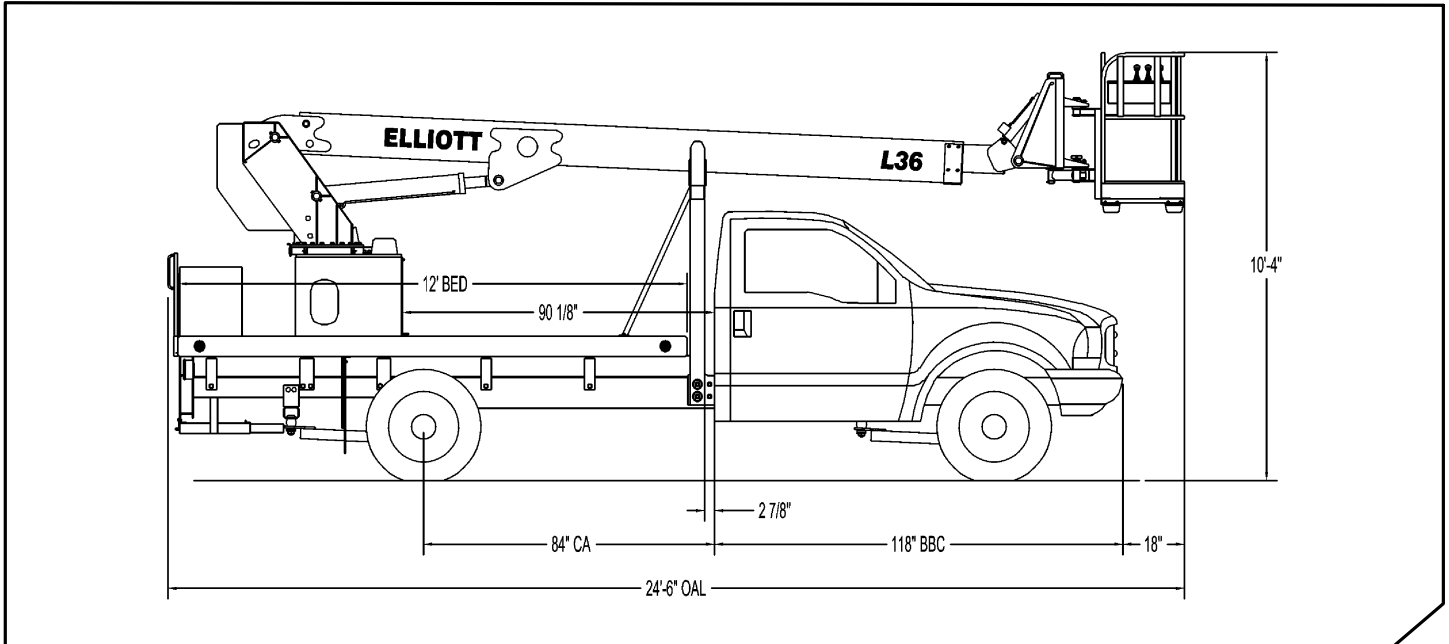


HiReach™ L36**GENERAL UNIT DESCRIPTION**

HiReach – The machine that launched an industry, the wide-ranging Elliott HiReach telescoping aerial workplatforms and cranes allow you to do more with just a single machine. From material handling and digging to basic crane and boom, the HiReach does the work of a fleet of trucks. Available with heights ranging from 35 feet to 158 feet, the HiReach comes fully equipped with standard features that are sold as options by our competition. Only Elliott features full hydraulic extension with no cables and chains. Our extension cylinder arrangement gives you the smoothest, most precise ride in the industry. What's more, all of Elliott's products can be customized to create tailor-made machines that include special platform features, pressure washers, body and tool box packages and more.

Basic unit includes base assembly supporting rotating turret, hydraulically powered rotation mechanism, oil reservoir, oil, manual hydraulic controls mounted on turret and full pressure hydraulic single stick remote control. 48" x 24" molded bucket with 2 access steps. Telescopic articulated boom design and pump. ECA "A" type hydraulically powered, individually controlled main outriggers. Power take off and pump drive, pump. Holding valves on all cylinders, fire extinguisher, remote start /shutdown at upper and lower controls, 12 volt emergency pump with switch at upper and lower controls, back up alarm, PTO hour meter, (1) body harness. Paint Hi-Reach white. Unit certified to Ansi 92.2 for Vehicle-Mounted Elevating and Rotating Aerial Devices. Working height 46 ft. Platform capacity 350 lbs.

Technical Specifications

Minimum Platform Height: 36' ground to platform floor.

Working Range: 41' max. height and 33' max. side reach with boom horizontal.

Work Platform: 24"x48" platform with 40" rails. Equipped with one safety harness lanyard attachment loop. One safety harness with 72" lanyard provided. Standard rating 300 lbs.

Platform Leveling System: Hydraulic "closed" system consisting of a platform cylinder interacting with a boom-actuated master cylinder mounted in boom support turret. System is provided with factory-set relief valves to compensate for oil expansion or overload during platform leveling operation. Releveling controls provided in platform and at ground controls to give purging and releveling capability.

Platform Controls: Three individual proportional electronic controllers with adjustable ramping meter pilot-operated, pressure-compensated modulating valves for smooth platform operation. The boom ground controls are mounted at rear of truck. Remote controls for boom operations from platform operate from a removable remote control box. Current is supplied to the electric remote controls through a cord in center of turret to an internal cable carrier inside of the boom.

Lower Control Box: Steel box with lockable door at rear of unit.

Frame: One piece, all welded, box-type fabrication. Bolt-on torque frame distributes load through truck frame.

Turret: Reverse offset turret is one-piece weldment. Turret rotates on large diameter ball bearing.

Rotation: 360 degree non-continuous. Hydraulic motor drives turret through gear box.

Boom: Fixed boom section made of steel rectangular tube with 1/4" wall thickness. Extension boom section made of steel rectangular tube with 3/16" wall thickness. Assembly includes heavy-duty cylinder fittings, pivot pins, and replaceable wear pads.

Boom Extension: One 2 1/2" internal cylinder extending the outer boom section.

Lift: Double-acting 5" full displacement, long-stroke cylinder provides smooth and stable boom elevation. Holding valve prevents boom from falling in event of hose failure.

Cylinders: All cylinders use micro-honed cylinder tubing, chrome shafts, top grade packing and protective rod wipers. Cylinder-mounted holding valves provided on all load holding cylinders.

Hoses: All high pressure hose is wire braid reinforced with a minimum safety factor of 4 to 1.

Oil Tank Capacity: 35 Gallon remote mounted.

Hydraulic System: Operating pressure approximately 1,500 PSI. System is parallel open-center type and is equipped with liquid-filled pressure gauge. Oil is supplied to upper cylinders through hoses in center of turret to an internal cable carrier inside of the boom.

Pump: Gear type, direct mount to truck PTO. 12 GPM @ 1,800 PSI on high engine speed.

PTO: Heavy-duty, high-speed. Cable engaged from cab.

Cab Equipment: PTO cable with indicator lights installed in truck cab. Engine speed control and start/kill installed with control switches in platform remote control box and lower control box. U/L approved 5:BC dry chemical fire extinguisher installed in truck cab.

Operators Manual & Video: Two copies of operation, maintenance, safety and parts manual provided with each unit. Operational and safety video provided at delivery.

Installation: Unit installed on customer's truck, painted, system and tank filled with oil, tested, inspected, certified and ready to operate.

Standard Paint: Top of bed painted with black nonskid surface. Underside of bed painted black. Rub rail, ground control box, oil reservoir, turret base, turret, boom and platform painted red, white or black.

Bumper: Bureau of Motor Carrier Safety rear bumper.

Weight: Approximately 7,000 lbs. with 12' steel floor bed less truck.

Truck Chassis: Approximately 84" C.A., 5,000 lb. front axle and 11,000 lb. rear wide-track axle, and 15,000 lb. GVWR required. Recommended GVWR is minimum for HI-REACH with flatbed only. Contact factory when additional equipment is to be added.

Options

Color: You may order your fleet colors.

Line Body: Aluminum or steel with 13'-4" length, a 92" width, a tread plate floor, and eight compartments.

Hydraulic Platform Rotation Outriggers: Elliott "V" type at rear with telescoping vertical section for stable 92 inch spread.

Winch: 1,000 lb. hydraulic winch with 90 ft. of 3/16" cable installed on boom with control valve in lower control box.

Bed: Length 12' (other lengths available). Width 94" with 1/8" steel tread plate floor or wood floor, 6" rub rail and heavy cross members. Stake pockets on both sides. Two-step grip strut rear ladder with two grab handles located on both sides. Chassis stop/turn/back-up lights remounted as necessary. Rear clearance and side marker lights and reflectors installed on bed.

Belt Drive PTO: with electric clutch (for units with automatic transmission).

110V Line to Platform

Cab Guard



4427 South 76th Circle

Omaha, NE 68127

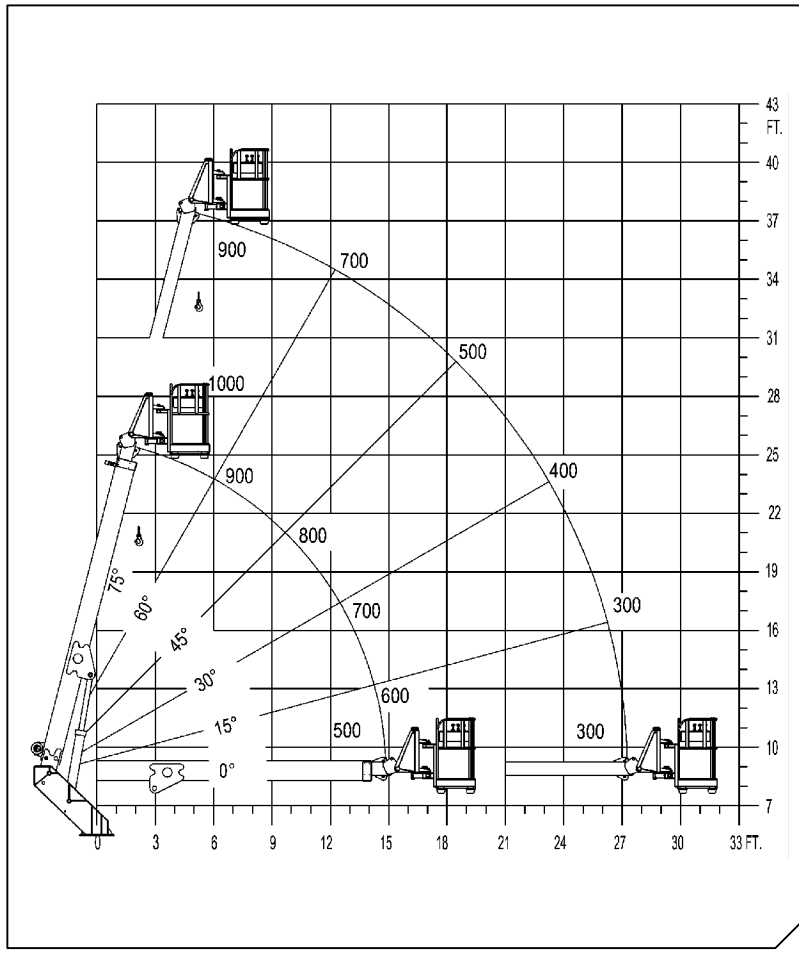
Phone: 402-592-4500

Fax: 402-592-4553

Email: info@elliottequip.com

www.elliottequip.com

Notes:



Notes:

THIS AERIAL DEVICE IS NON-INSULATING. IT PROVIDES NO ELECTRICAL PROTECTION. CONTACT WITH OR INADEQUATE CLEARANCE TO AN ENERGIZED LINE OR APPARATUS IS AN ELECTROCUTION HAZARD.

Elliott Equipment Company reserves the right to change the specification of any unit at any time without prior notice. This brochure is only a statement of general specifications on the date of this publication. For more detailed info on specific HiReach trucks go to www.elliottequip.com